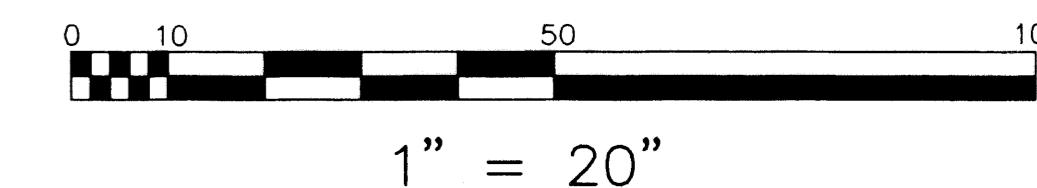
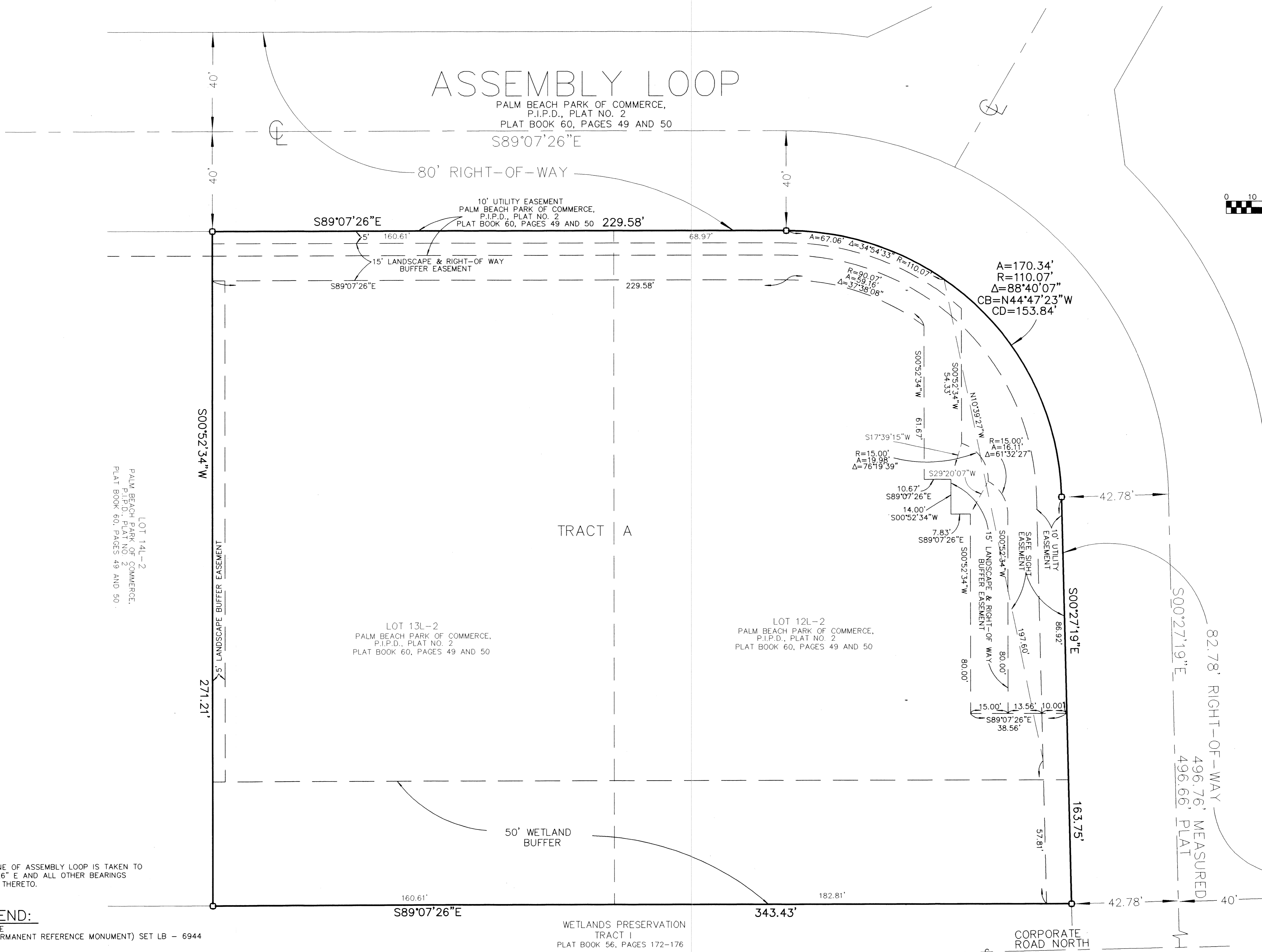


PALAZZO GRANDE

BEING A REPLAT OF
 LOTS 13L-2 AND 12L-2
 PALM BEACH PARK OF COMMERCE, P.I.P.D., PLAT NO. 2
 ACCORDING TO THE PLAT RECORDED IN PLAT BOOK 60, PAGES 49 AND 50
 PUBLIC RECORDS OF PALM BEACH COUNTY, FLORIDA.
 LYING IN SECTION 18, TOWNSHIP 41 SOUTH, RANGE 41 EAST,
 PALM BEACH COUNTY, FLORIDA

APRIL 2003

SHEET 2 OF 2



NORTHERN PALM BEACH COUNTY IMPROVEMENT DISTRICT
 UNIT OF DEVELOPMENT NO. (NO. 16)

THIS INSTRUMENT WAS PREPARED BY
 RONALD E. STOTLER
 FLORIDA SURVEY & MAPPER #5026
 IN THE OFFICE OF DEARLOVE AND ASSOCIATES
 450 SOUTH OLD DIXIE HIGHWAY
 JUPITER, FLORIDA, 33458

Dearlove & Associates
 LAND SURVEYORS
 LICENSED BUSINESS - 6944
 450 S. OLD DIXIE HWY.
 JUPITER, FLORIDA 33458
 561-746-8743
 FAX 561-746-9632

SUBDIVISION PALAZZO GRANDE
 BOOK 99 PAGE 164
 FLOOD ZONE B FLOOD MAP # 050 B
 QUAD # T1 ZONING P.I.P.D.
 SE ZIP CODE 33478
 TAZ 850
 PUB NAME PALM BEACH PARK OF COMMERCE